



Pacific Springs
Immanuel *signature* community

Independent Living Premier Patio Home

Model Q Floor Plan (Main Level)



2 Bedrooms | 2 Bathrooms | 1,780 Square Feet (3,555 total sq. ft.)



Pacific Springs
Immanuel *signature* community

Independent Living Premier Patio Home

Model Q Floor Plan (Main Level)



2 Bedrooms | 2 Bathrooms | 1,780 Square Feet (3,555 total sq. ft.)



Independent Living Premier Patio Home

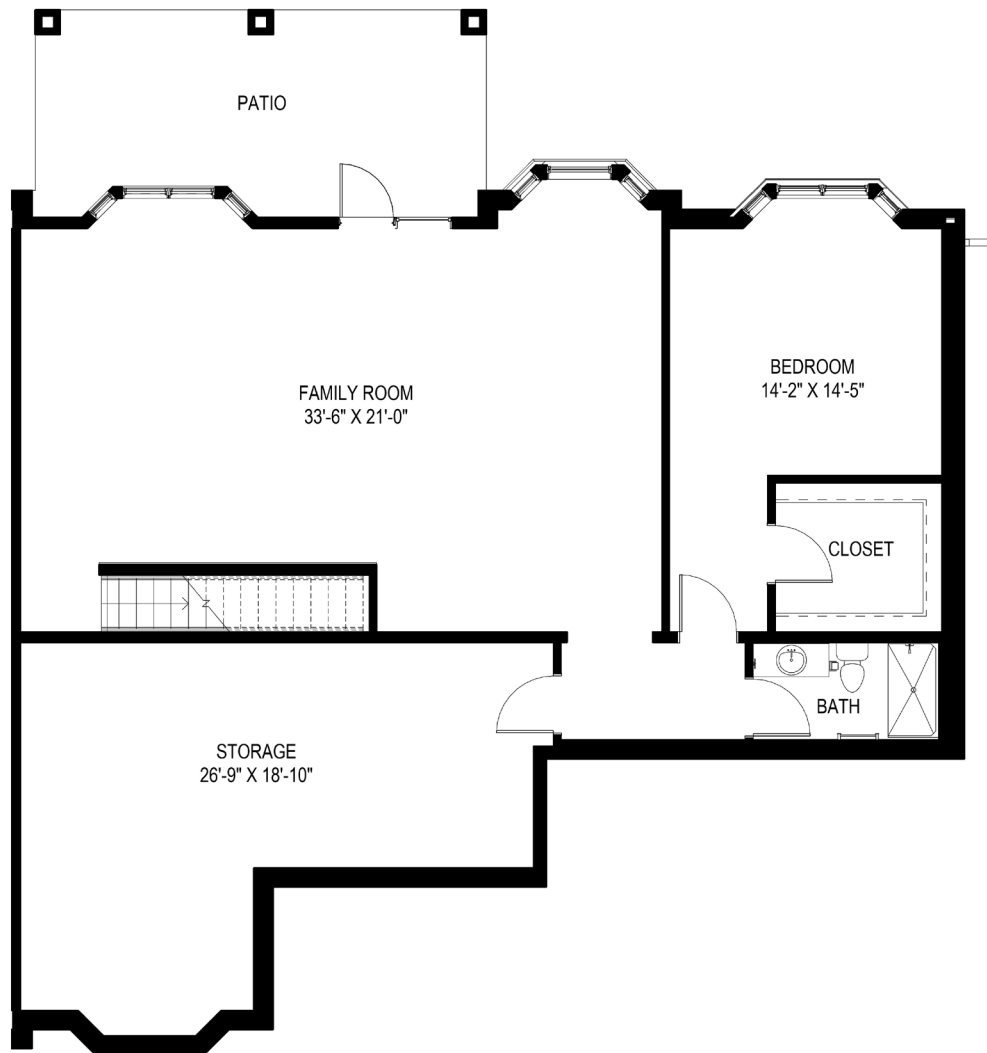
Model Q Floor Plan (Lower Level)



1 Bedroom | 1 Bathroom | 1,775 Square Feet (3,555 total sq. ft.)

Independent Living Premier Patio Home

Model Q Floor Plan (Lower Level)



1 Bedroom | 1 Bathroom | 1,775 Square Feet (3,555 total sq. ft.)